

LAST ISSUE OF THE "NO NAME NEWSLETTER"

NAME YOUR NEWSLETTER

Mail entries to Box 8077, Essex, 05451 or drop at Essex Free Library by June 13, 1992

COMMITTEE REPORTS

President's Memo:

The bell from the Essex Classical Institute (ECI), rang to herald the first meeting of the Essex Community Historical Society (ECHS) on 10/1/91. In the spirit of that night, we have gathered the threads to weave a tapestry of our past, present and future. I would like to report the progress made toward our first year's goals.

1. A Board meeting was held in the museum in December 1991 at the end of the Bicentennial Year.
2. Membership has more than doubled since our first annual meeting from 52 to over 150 individuals.
3. The museum will open to the public on **June 13, 1992.**

The tapestry of grants, gifts, labor, volunteers, collections and total community support has begun.

Thank you, our faithful members, we are in the alpha of our society! *Carol Ann Peck Greig*

Buildings & Grounds:

After meeting all of our Labor and Industry approvals, the White School is soon to open as the "Harriet Farnsworth Powell Historical Museum." Minor interior work still needs to be done. The ECHS will initiate grants to obtain funding for exterior painting and landscaping.

Collections:

The building is ready and the collection has been moved in. We now need to have volunteers catalog each item and set up the exhibits. Work days are: Monday 7 to 9 p.m. and Friday 12 to 3 p.m. Call Jerry Fox at 878-6486 or Camille Vickers at 878-8299.

REMEMBER GRANDMA'S ATTIC???

Old treasures, old photographs..... Your Essex Museum is looking for all the above....including "Folklore"....stories and facts of yesterday's residents (famous and infamous) and happenings in almost forgotten Essex. Jot down and bring to Grand Opening.

THANK YOU

A special thank you goes out to Marylou Marcussen for designing the museum logo.

MEMORIAL DAY MEMORIES

As told to Sheila Kane by Ted Baker.

"Early on Memorial Day 1918, Lee Baker's sons, John, Jim and Ted headed for the old ice house along the shore of the Winooski River. Dan Stone, the local shoemaker, rented boats for 50 cents a day. The foursome caught whitefish and bullhead. After cooking them on the shore, they rowed back to the Landing (along the IBM road). A great day was had by all."

HAPPY MAY BIRTHDAYS TO THE OVER 90'S GANG!!!!

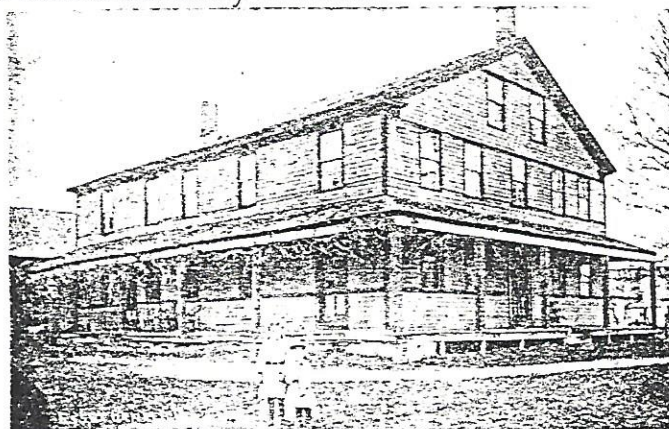
Sarah Boyden
Yvonne Froment
Fran Frost

Theresa Gates
Alberic Gentes
Regina Trombley

Best wishes to all of you who hold so many special memories of this community!

HISTORICAL SLEUTHING

Can you identify the place and the people in this picture? Let us know at the open house. Photo on loan from Mary Whitten.



ESSEX EPHEMERA

"Where was the first Essex Post Office and who was the first Essex Postmaster?" See answer at the bottom. (Feel free to submit your questions to be considered for the next issue.)

Page's Corner (the junction of Old Stage, Colonel Page, and Brigham Hill Roads) and Ralph Rick (who has any information about Mr. Rick???)

MARK YOUR CALENDAR!!

CENTENNIAL NEWS

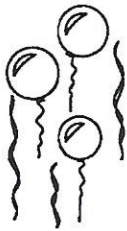
1. Essex Junction Community Photo to be taken on May 23rd at 9am at the Five Corners.
2. Centennial Ball Nov. 7, 1992 at the Inn at Essex. Price \$19.92 a couple! Call 878-0713 for reservations.

COMING EVENTS

On Saturday, June 6th Jane Beck and Greg Sharo of the Vermont Folk Life Center, will be offering a morning-long workshop on the "Art of Oral History." The program will run from 9 until noon at Memorial Hall. Bring your pencils! The program is being jointly sponsored by the Essex Free Library and the ECHS.

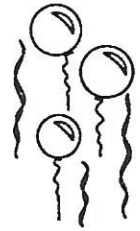
DO YOU HAVE TIME?

Volunteers are needed to work three hour shifts during museum hours. Please call Harry Landon (878-9588) if you'd like to help.



GRAND OPENING

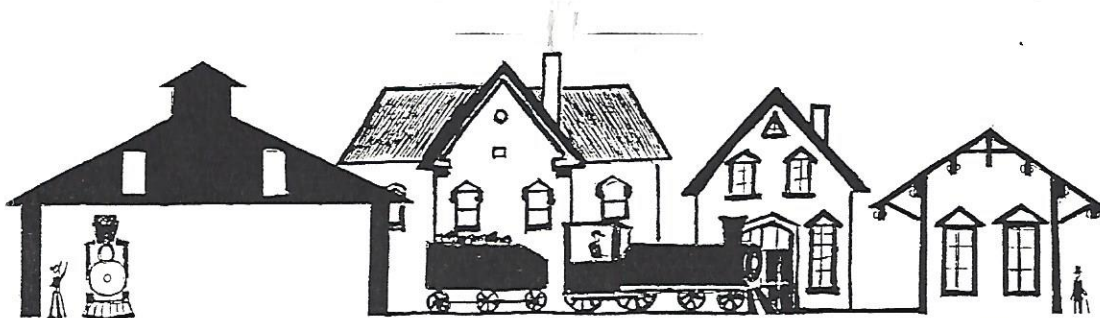
of the



Harriet Farnsworth Powell Historical Museum

Saturday, June 13, 1992, 1-4 p.m.

Regular Museum Hours: Sat. 10-4 p.m. & Sun. 1-4 p.m.



ESSEX COMMUNITY HISTORICAL SOCIETY

ESSEX-TOWN-EST.1763 ESSEX JCT. EST. 1892 ESSEX COMM. HISTORICAL SOCIETY-EST.1991

Box 8077, Essex, VT 05451